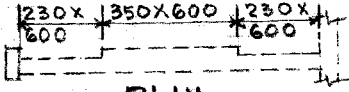
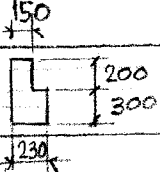
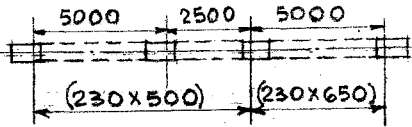
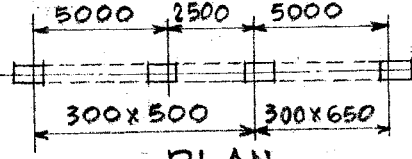
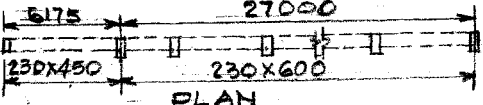
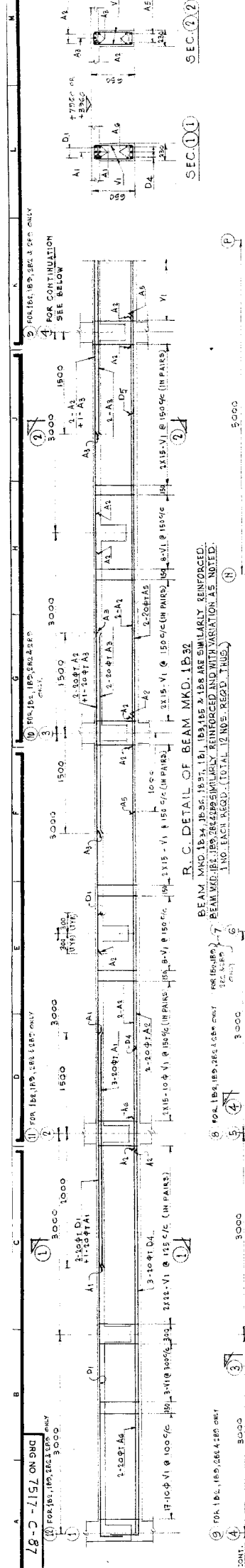


DRG NO. 7517-C-63

SCHEDULE OF BEAMS AT +3960 & +7960 LEV.

SIZE	BEAM MKD.	REMARKS
230 X 650	1B-1 TO 1B-9, 1B-19, 1B-24, 1B-30, 1B-32 TO 1B-38, 1B-42, 1B-46 2B-1 TO 9, 2B-20 TO 2B-23.	
230 X 600 & 350 X 600	1B-29, 1B-29A, 2B-27	 <p style="text-align: center;">PLAN</p>
230 X 500	1B-10, 1B-12 TO 1B-16, 1B-18, 1B-21, 1B-22 1B-23, 1B-25, 1B-26, 1B-28, 1B-39, 1B-43, 1B-43A 1B-44, 1B-45, 2B-10, 2B-12 TO 2B-17, 2B-24, 2B-26	
230 X 400	1B-31.	
230 X 300	1B-11, 1B-27, 2B-11, 2B-25, 3B-19, 3B-22	<p style="text-align: center;">CROSS SECTION OF 3B19</p> 
300 X 500	1B-17, 2B-18	
230 X 500 & 230 X 600	1B-40	 <p style="text-align: center;">PLAN</p>
230 X 700	1B-20, 3B-16 ▲ A	
300 X 500 300 X 650	1B-41	 <p style="text-align: center;">PLAN</p>
230 X 600	3B-1, 3B-3 TO 3B-8, 3B-15, 3B-20.	
230 X 450	3B-10 TO 3B-13, 3B-17, 3B-18, 3B-21	
300 X 450	3B-14.	
230 X 250	3B-23.	
230 X 450 & 230 X 600	3B-2, 3B-9.	 <p style="text-align: center;">PLAN</p>

STRES UNLESS OTHERWISE STATED.



DWG NO 7517-C-87

FOR 1B2, 1B3, 1B4, 1B5, 1B6, 1B7, 1B8, 1B9, 1B10, 1B11, 1B12, 1B13, 1B14, 1B15, 1B16, 1B17, 1B18, 1B19, 1B20, 1B21, 1B22, 1B23, 1B24, 1B25, 1B26, 1B27, 1B28, 1B29, 1B30, 1B31, 1B32, 1B33, 1B34, 1B35, 1B36, 1B37, 1B38, 1B39, 1B40, 1B41, 1B42, 1B43, 1B44, 1B45, 1B46, 1B47, 1B48, 1B49, 1B50, 1B51, 1B52, 1B53, 1B54, 1B55, 1B56, 1B57, 1B58, 1B59, 1B60, 1B61, 1B62, 1B63, 1B64, 1B65, 1B66, 1B67, 1B68, 1B69, 1B70, 1B71, 1B72, 1B73, 1B74, 1B75, 1B76, 1B77, 1B78, 1B79, 1B80, 1B81, 1B82, 1B83, 1B84, 1B85, 1B86, 1B87, 1B88, 1B89, 1B90, 1B91, 1B92, 1B93, 1B94, 1B95, 1B96, 1B97, 1B98, 1B99, 1B100

R. C. DETAIL OF BEAM MKD. 1B32

BEAM MKD. 1B32, 1B33, 1B34, 1B35 & 1B36 ARE SIMILARLY REINFORCED.
 BEAM MKD. 1B37, 1B38, 1B39, 1B40, 1B41, 1B42, 1B43, 1B44, 1B45, 1B46, 1B47, 1B48, 1B49, 1B50, 1B51, 1B52, 1B53, 1B54, 1B55, 1B56, 1B57, 1B58, 1B59, 1B60, 1B61, 1B62, 1B63, 1B64, 1B65, 1B66, 1B67, 1B68, 1B69, 1B70, 1B71, 1B72, 1B73, 1B74, 1B75, 1B76, 1B77, 1B78, 1B79, 1B80, 1B81, 1B82, 1B83, 1B84, 1B85, 1B86, 1B87, 1B88, 1B89, 1B90, 1B91, 1B92, 1B93, 1B94, 1B95, 1B96, 1B97, 1B98, 1B99, 1B100

FOR 1B2, 1B3, 1B4, 1B5, 1B6, 1B7, 1B8, 1B9, 1B10, 1B11, 1B12, 1B13, 1B14, 1B15, 1B16, 1B17, 1B18, 1B19, 1B20, 1B21, 1B22, 1B23, 1B24, 1B25, 1B26, 1B27, 1B28, 1B29, 1B30, 1B31, 1B32, 1B33, 1B34, 1B35, 1B36, 1B37, 1B38, 1B39, 1B40, 1B41, 1B42, 1B43, 1B44, 1B45, 1B46, 1B47, 1B48, 1B49, 1B50, 1B51, 1B52, 1B53, 1B54, 1B55, 1B56, 1B57, 1B58, 1B59, 1B60, 1B61, 1B62, 1B63, 1B64, 1B65, 1B66, 1B67, 1B68, 1B69, 1B70, 1B71, 1B72, 1B73, 1B74, 1B75, 1B76, 1B77, 1B78, 1B79, 1B80, 1B81, 1B82, 1B83, 1B84, 1B85, 1B86, 1B87, 1B88, 1B89, 1B90, 1B91, 1B92, 1B93, 1B94, 1B95, 1B96, 1B97, 1B98, 1B99, 1B100

FOR 1B2, 1B3, 1B4, 1B5, 1B6, 1B7, 1B8, 1B9, 1B10, 1B11, 1B12, 1B13, 1B14, 1B15, 1B16, 1B17, 1B18, 1B19, 1B20, 1B21, 1B22, 1B23, 1B24, 1B25, 1B26, 1B27, 1B28, 1B29, 1B30, 1B31, 1B32, 1B33, 1B34, 1B35, 1B36, 1B37, 1B38, 1B39, 1B40, 1B41, 1B42, 1B43, 1B44, 1B45, 1B46, 1B47, 1B48, 1B49, 1B50, 1B51, 1B52, 1B53, 1B54, 1B55, 1B56, 1B57, 1B58, 1B59, 1B60, 1B61, 1B62, 1B63, 1B64, 1B65, 1B66, 1B67, 1B68, 1B69, 1B70, 1B71, 1B72, 1B73, 1B74, 1B75, 1B76, 1B77, 1B78, 1B79, 1B80, 1B81, 1B82, 1B83, 1B84, 1B85, 1B86, 1B87, 1B88, 1B89, 1B90, 1B91, 1B92, 1B93, 1B94, 1B95, 1B96, 1B97, 1B98, 1B99, 1B100

SEC. (1)

SEC. (2)

SCALE 1/8"

SCALE 1/8"

SCALE 1/8"

SCALE 1/8"

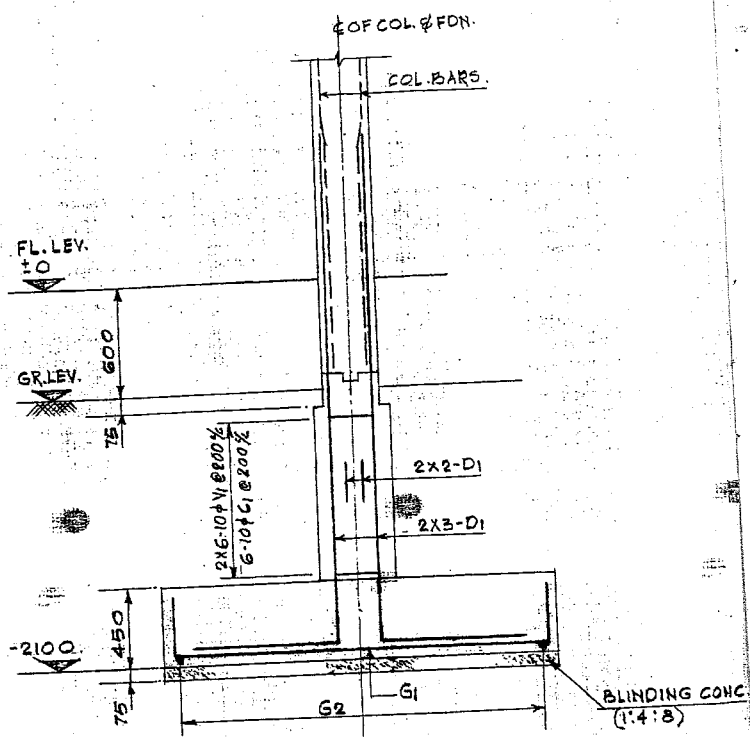
SCALE 1/8"

SCALE 1/8"

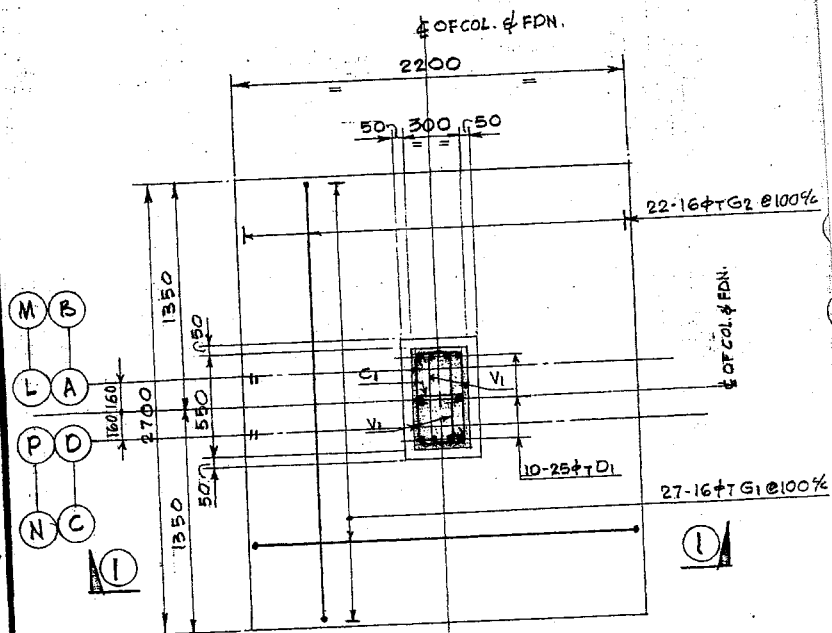
SCALE 1/8"

SCALE 1/8"

SCALE 1/8"



SEC - (11)



R.C. DETAIL OF COL. FDN. MKD. F1
(26 NOS. REQD. THUS.)

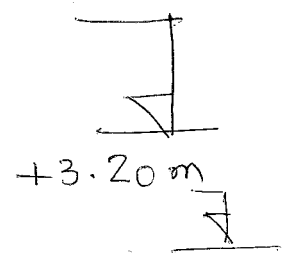
No	DATE	ZONE	REMARKS	BY	APP.
REVISION					

Testative Elevation - Not to Scale.

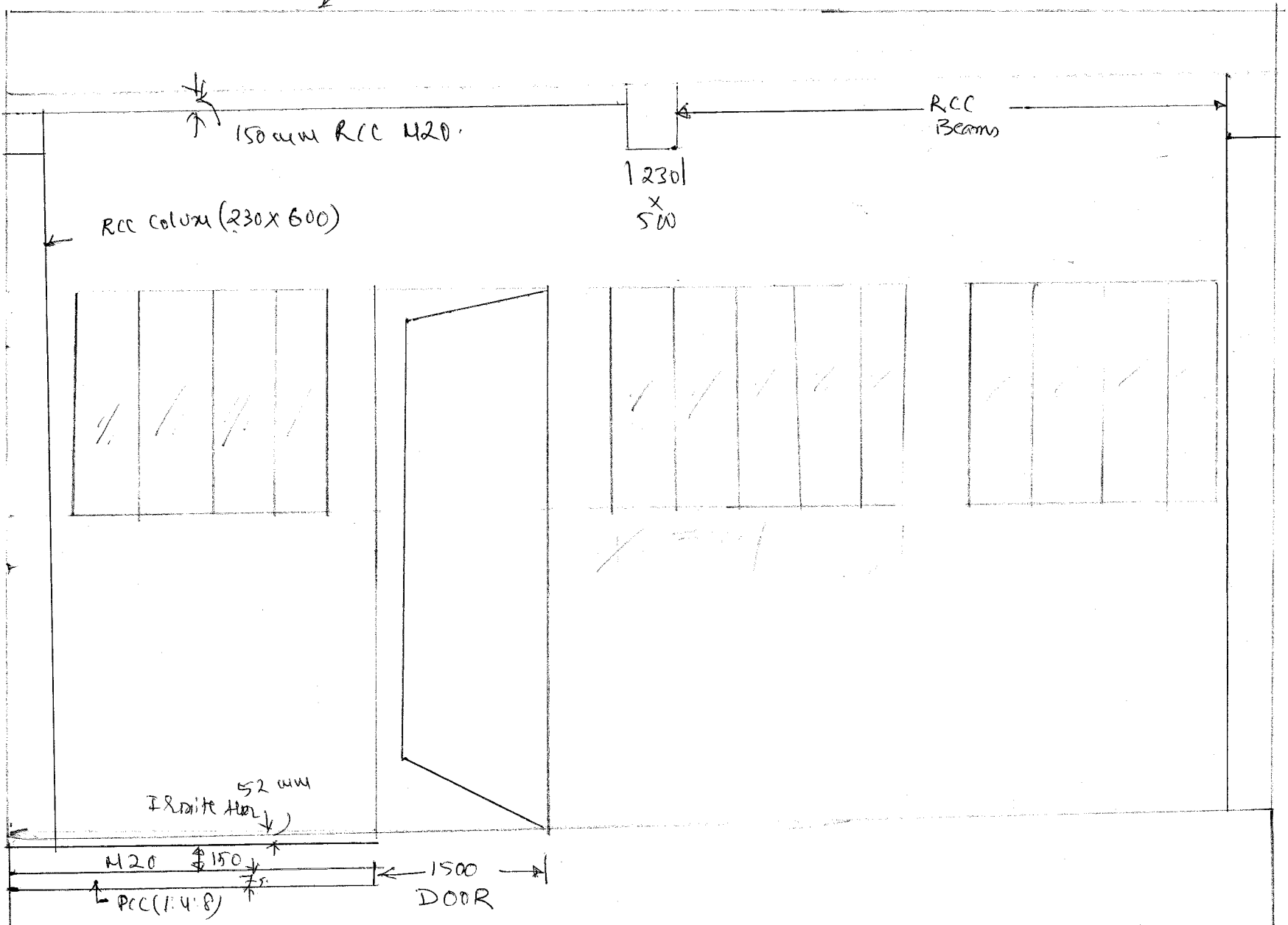
+3.95 to w

Roof ϕ

← parapet to be matched with



+3.20 m



↑
GLAZED
window
1.50 ht x 3.0/3.50
to match
existing
↓

PLINTH
LEVEL
to match existing
building.

M20
150
RCC (1.4'8)

1500
DOOR

