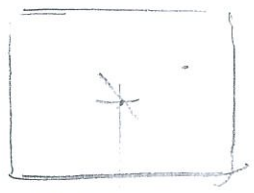
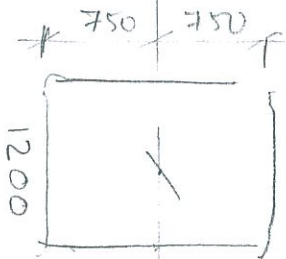


C/C OF COLUMN 15000/16000

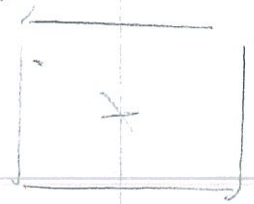
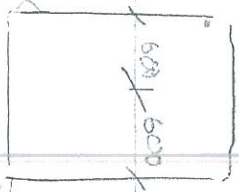
A

B

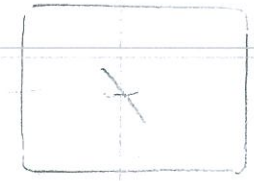
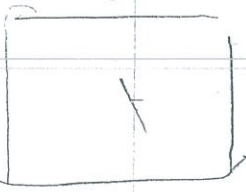


4000

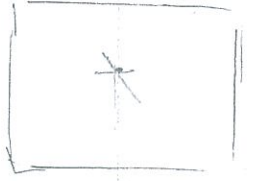
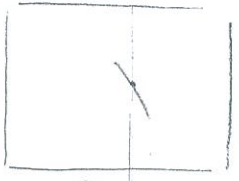
Drain



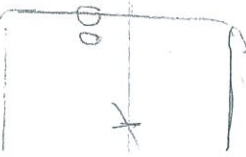
4000



4000



4000



Provision of suitable  
Beam to lift 2T weight  
through chain pulley block  
PROVISION OF 2-ISM  
175 BACK TO BACK IN  
LAST BAY ONLY

PEB TRUSS

poly carbonate  
Translucent sheet  
@ every 3 mtr

Pre-coloured Coated Galvalume sheet + Translucent sheet @ every 3 mtr

2 nos  
ISM 175  
BIB

PEB  
COLUMN

PEB  
COLUMN

2.1

HEAVY  
RCC BEAM  
300 x 410  
depth

EXISTING  
RRHARD  
900 x 1000

1500

12000 c/c

12000 TOP OF RAIL TO TOP  
OF CRANE (ELE PANELS)  
(+10.1)  
Min 2000

1500

Pedestal  
750 x 750

FOOTING

4-50

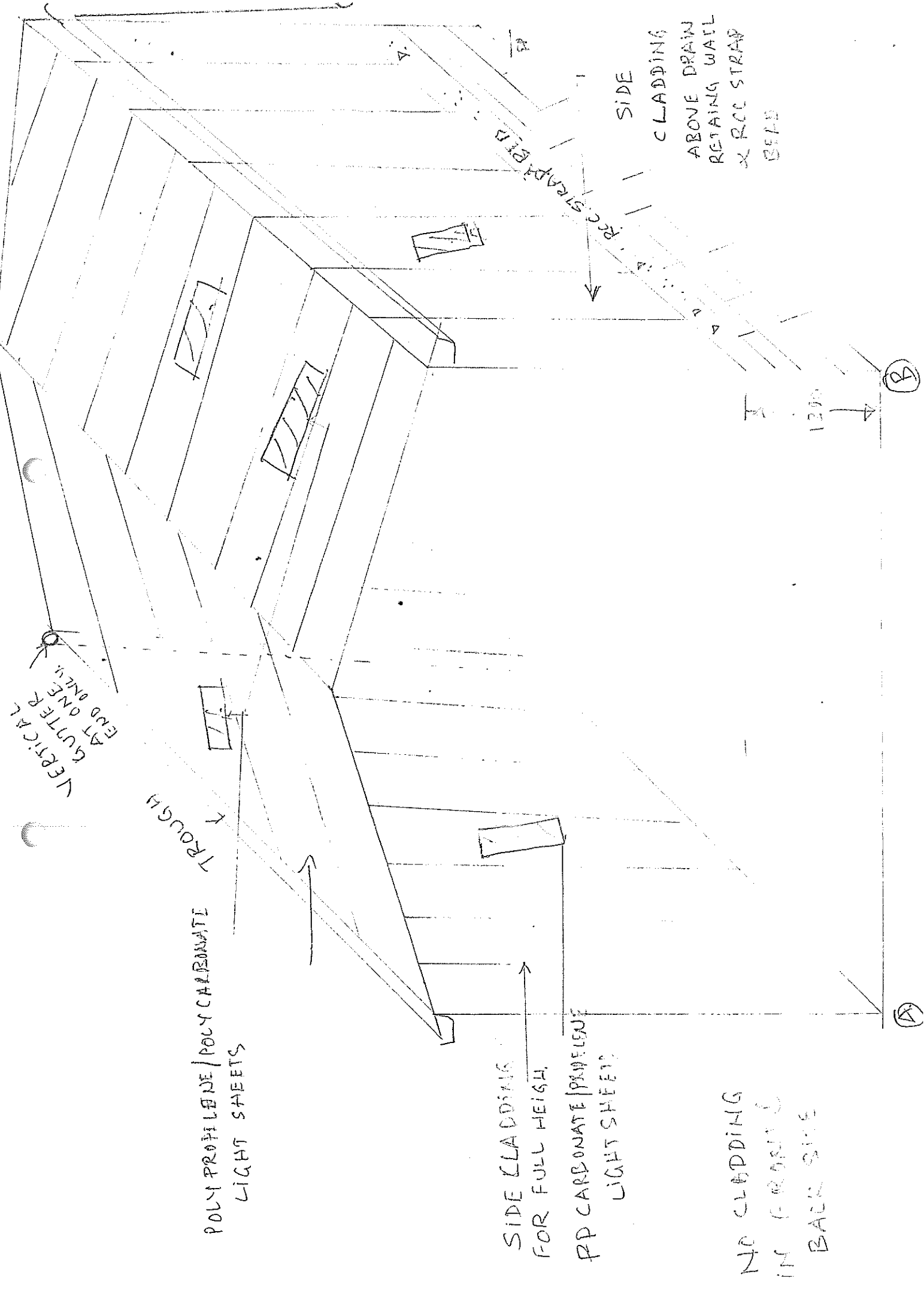
1200

Section x-x

5

H-T





VERTICAL  
GUTTER  
END ONLY

TROUGH

POLYPROPYLENE / POLYCARBONATE  
LIGHT SHEETS

SIDE CLADDING  
FOR FULL HEIGHT

PP CARBONATE / POLYPROPYLENE  
LIGHT SHEETS

NO CLADDING  
IN FRONT &  
BACK SIDE

SIDE  
CLADDING  
ABOVE DRAIN  
RETAINING WALL  
X RCC STRAP  
BEFB

1200

(B)

(A)